

Fuel Analyzer

for low grade diesel oil

IKM-300 analyze HUE (fuel color index) compare with standard data
In case result is inferior, it warn by LED to defend engine.
You can keep good condition of engine according to the data
from **IKM-300** by continually recording for one year

POINT

- ★ Gauge the fuel color automatically by starting engine
- ★ Long term and continually recording for gauge data
- ★ High precise method for fuel quality
- ★ Adjustable standard HUE index
- ★ Release the warning LED by specific tool only.



IKM-300

Latest new clean diesel engine (eg.KOMATSU Tier3&4) includes HPCR(high-pressure common rail) fuel injection syst
So these engines require sensitive fuel management.

Let's install IKM-300 to keep your machine with good condition and conserve our enviroment for the future.

Why did **IKM-300** record BIG-SALES in Japan

- ★ Save the maintenance cost by total fuel management.(Rentals)
- ★ Fuel troubles have reduced for the change of user's action by announcement of install **IKM-300**(Rentals)
- ★ Solve the cause of an engine accident easily by long term record of fuel-analysis.(Users)
- ★ To avoid fuel troubles in advance, we can reduce running costs successfully.(Users)

SANKO

SANKO-SEIKI Nara Japan

<http://www.sanko-seiki.co.jp> i_sasaoka@sanko-seiki.co.jp

Specification for IKM-300

ANALYSIS UNIT

Body: at fuel return line, analyze HUE index by photosensor.

Modulate not required by no influence from temperature.

Simple structure, reasonable price without mechanical trouble.

- ★ Produced by reinforced plastic
- ★ Produced by reinforced plastic Size: 145mm*90mm*56mm (height)
- ★ Work voltage: DC10-35V
- ★ Working components are sealed
- ★ Weight: 0.4kg



Attachments

Body, gauge record with 1GB memory.

Warning LED, cable (3m)

Fuel Horse (1m)

Bracket



warning LED



bracket



fuel horse

OPTIONAL PARTS

Application software (CD-R)

Record loading unit (with USB cable)



application CD



USB cable



recording unit

OPERATION

Analyze HUE Index compare with standard data, then record in the internal memory.

Data of the record can be managed by EXEL in computer.

In case HUE Index is inferior, it warned by LED.

Reduce the maintenance cost by required fuel check for machine that by IKM-300 only.

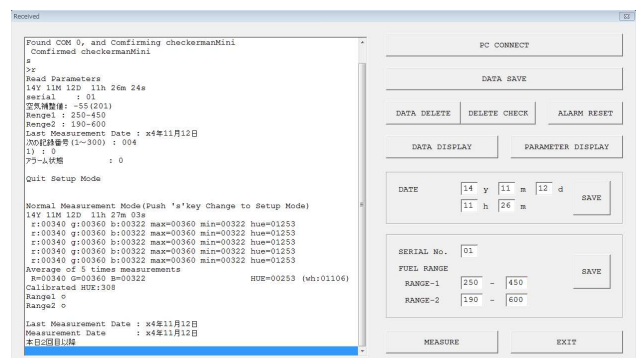


Install IKM-300 in Pump room

HUE SAMPLE



3.6	12.5	20.2	21.0	25.8	51.2	54.8
Fuel oil A	LSA	Diesel oil	Diesel oil	Diesel oil	Kerosen	Kerosen



Application